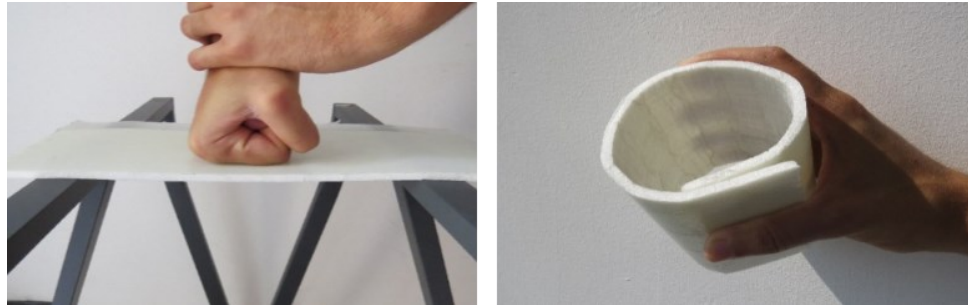


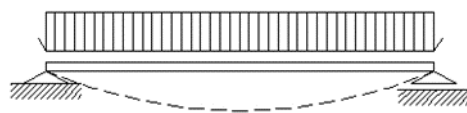
MadFlex 5 mm LUX

The MadFlex 5mm LUX variant is the perfect solution for those who need to create structures and applications with natural diffused light. The panel can also be projected in order to show thinner and brighter areas. Despite the translucency, it has great mechanical properties and an excellent insulating power.

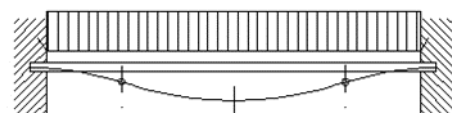


| | UNIT | TYPICAL VALUE | TEST |
|-----------------------------------|----------------------|---------------|-------------------|
| Thickness | mm | 5 | |
| Areal weight | kg/m ² | 0.95 | |
| Tensile strength | kN/m | 400 | ASTM D3039/D3039M |
| Failure bending moment | N·m/m | 180 | ASTM D7250/D7250M |
| Bending stiffness "rigid side" | N·m ² /m | 35 | ASTM D7250/D7250M |
| Bending stiffness "flexible side" | N·m ² /m | 0.3 | ASTM D7250/D7250M |
| Flatwise compressive strength | MPa | 1.2 | ASTM C365/C365M |
| Heat transfer coefficient | W/ m ² °K | 7.5 | DIN52612 |

Maximum load for a 0,5 m x 0,5 m panel for two different restraint conditions:



Simple supports: 293 kg



Fixed supports: 4089 kg

OTHER FEATURES

- Thermoformable
- Super flex - 10 m rollable rollable in a diameter of 20 cm
- Excellent resistance to atmospheric and UV radiations
- Excellent resistance to chemical agents (eg hydrocarbons)
- Biocompatible
- > 100 thousand bending cycles
- Excellent vibration damping ability
- Partial elasticity that improves behavior to impulsive forces
- Extremely low environmental impact

